

INFRARED SYSTEMS DEVELOPMENT CORPORATION

BLACKBODY SOURCES



IR-508



IR-518 & IR-519



IR-563 & IR-564



IR-574 with IFW

- 0.1 °C Temperature Resolution
- < 0.08 °C N.E.T.
- < +/- 0.2 °C Peak to Peak Stability
- Energy Modulators (Choppers)
- Motorized Aperture/Filter Wheels

Cavity Blackbody Sources ($\epsilon \approx 0.99$)		
IR-508	0.25"	50-1050°C
IR-518	0.40"	50-1050°C
IR-519 *NEW*	0.40"	50-1200°C
IR-563	1.0"	50-1050°C
IR-564	1.0"	50-1200°C
IR-574	2.25"	50-1200°C

- Custom Apertures
- Absolute and Differential Modes
- Proven 20 Degree Recessed Cone Cavity
- IR Camera Calibration & Uniformity Testing
- Non-Contact Thermometer Calibration

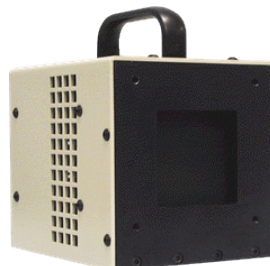
Infrared Systems Development Corporation is dedicated to the Quality Production of a Full Line of Blackbody Sources for Precision Calibration, Alignment and Testing. Choose from our Large, High Temperature IR-574 to our Miniature IR-508 Cavity Blackbody Sources for Point Source or High Energy Applications. Or, for Low Temperature or Larger Area Blackbody Sources from -30° C to +350° C, the New IR-2100 2" Square Blackbody and the IR-140 & IR-160 12" Square Blackbody Systems Provide Excellent Stability and Uniformity for IR-camera Calibration, and Non-Contact IR Thermometer Applications. All Of Our Blackbody Sources Are Controlled By The IR-301 Precision PID Controller With 0.1°C Resolution and RTD Cold Junction Sensor.

IR-140, IR-160 & IR-150



Extended Area Blackbody Sources ($\epsilon \approx 0.96$)		
IR-2100	2"x2"	(-5) to +140 °C
IR-2101	2"x2"	(-30) to +75 °C
IR-2103	3"x3"	(-5) to +125 °C
IR-2106	6"x6"	+5 to +150 °C
IR-140	12"x12"	Amb to 230 °C
IR-160	12"x12"	Amb to 350 °C
IR-150	12"x12"	Amb to 500 °C

IR-2100 Series



IR-301 Controller



WE HAVE A SOLUTION FOR YOU