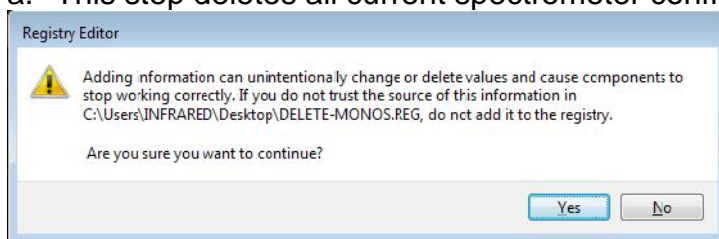


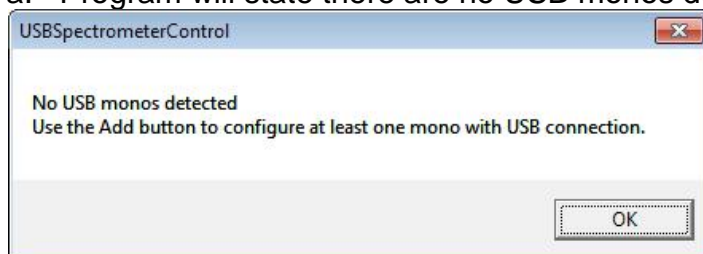
## IHR Spectrometer Reset and Add Procedure

1. Close all Laspec (LabView programs) and Horiba programs. No FPAS or spectrometer software can be running until instructed to do so.
2. Make sure that the IHR 320 unit is connected via USB and powered ON.
3. Download the (Spectrometer-Reset Win7\_x64.ZIP file and extract the 2 REG files from the ZIP. DO NOT RUN REG FILES YET!  
[ftp://ftp.infrareddsystems.com/pub/IHR\\_RESET/](ftp://ftp.infrareddsystems.com/pub/IHR_RESET/)

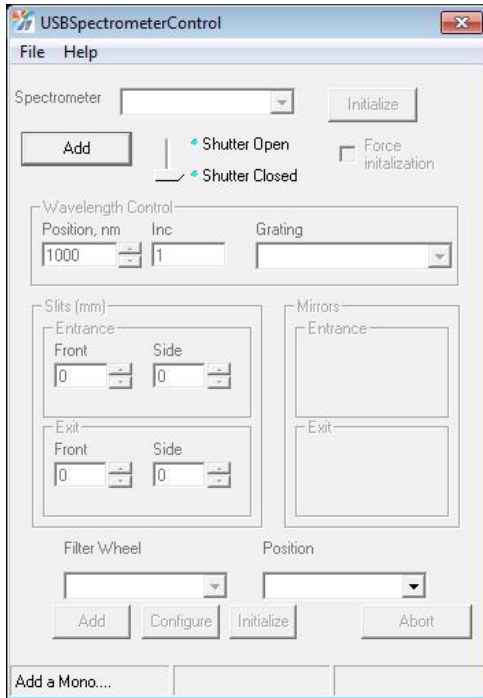
4. Double click (open) DELETE-MONOS.REG file. Click yes to allow this file to add/merge with the registry.
  - a. This step deletes all current spectrometer configurations



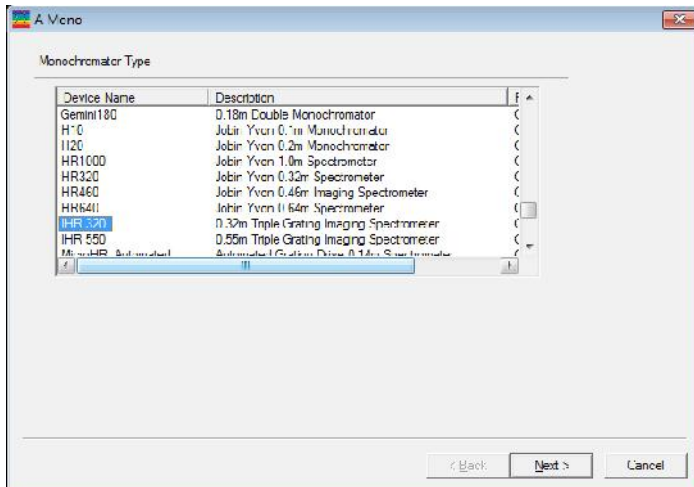
5. Open Horiba USB Control Program.
  - a. Program will state there are no USB monos detected. Click OK.



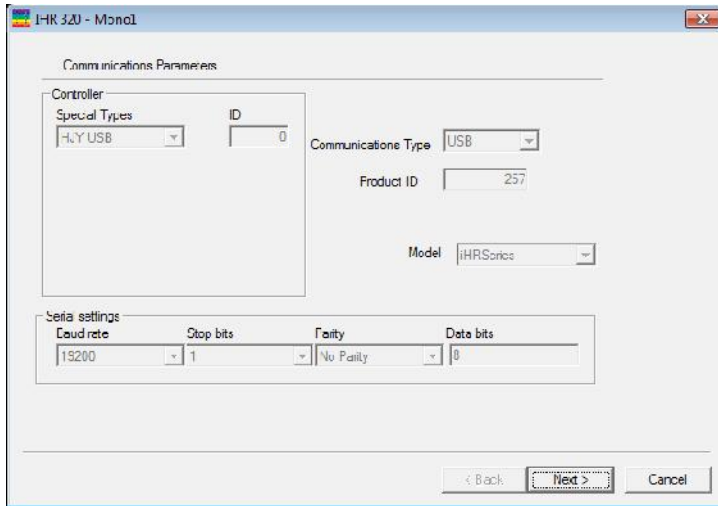
6. Click ADD.



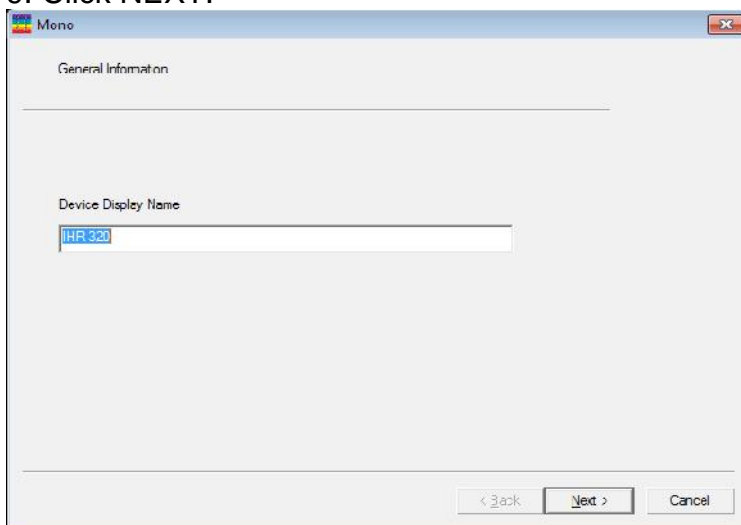
7. Select IHR320 and click NEXT.



**8. Click NEXT**



**9. Click NEXT.**



10. Enter the information and check marks as shown below then click NEXT.

Accessory information

Gratings	grooves/mm	Blaze	Description
Grating #1	100	6000	51034
Grating #2	300	4000	51023
Grating #3	75	8000	51037

Shutters

Front Entrance     Side Entrance

Slits

Front Entrance    2mm

Front Exit    2mm

Side Entrance    2mm

Side Exit    2mm

1st Intermediate

2nd Intermediate

Mirrors

Entrance Mirror

Type: Controllable

Default: Axial

Exit Mirror

Type: Controllable

Default: Axial

< Back    Next >    Cancel

11. Click VALIDATE HARDWARE, then click FINISH.

Summary

Device ID: Mono1  
Device Class: jyDevClassMono  
Device Type: jyDevTypeMono  
Communication Settings:  
Type: USB    Port number: 257    Device Name: iHR320  
Baud rate: 19200    Parity: No Parity    Stop bits: 1    Data bits: 8

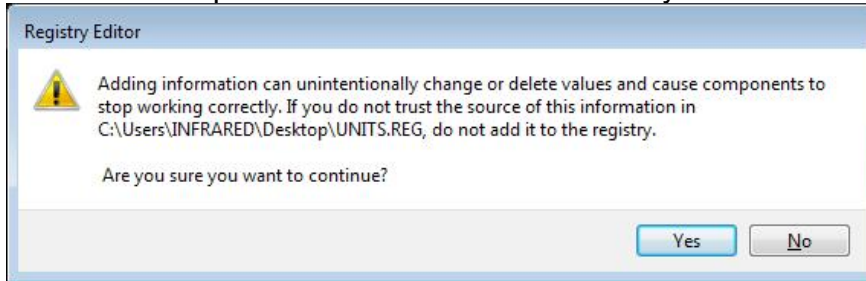
Validate Hardware

< Back    Finish    Cancel

12. CLOSE Horiba USB Spectrometer Control Program.

13. Double click (open) UNITS.REG file. Click yes to allow this file to add/merge with the registry.

a. This step re-sets the SLIT Units correctly to mm.



14. Spectrometer will now function normally with either LabView or Horiba control programs.